

85mm

185mm

**FIRST AID**

If poisoning occurs, contact a doctor or Poisons Information Centre. Phone Australia 13 11 26.

**ENVIRONMENTAL PROTECTION**

Ivermectin is extremely toxic to aquatic species. Do not contaminate dams, rivers, streams or other waterways with the chemical or used container.

**DISPOSAL**

Dispose of container by wrapping with paper and putting in garbage.

**STORAGE**

Store below 30°C (room temperature). Store bottle in carton to protect from light.

**Harmful if contact with skin. Causes serious eye irritation. May damage fertility or the unborn child.**

**May cause harm to breast-fed children.**

Do not handle until all safety precautions have been read and understood.

Avoid contact during pregnancy or while nursing.

Wash contacted areas thoroughly after handling.

If exposed or concerned or if eye irritation persists: Get medical advice.

Store locked up and in a well-ventilated place. Keep cool.



**UN 2902  
PESTICIDE,  
LIQUID,  
TOXIC,  
N.O.S., PG III**

For the treatment and control of ivermectin and clorsulon sensitive strains of internal and external parasites of cattle, including adult liver flukes.

**CAUTION**  
KEEP OUT OF REACH OF CHILDREN  
READ SAFETY DIRECTIONS  
FOR ANIMAL TREATMENT ONLY

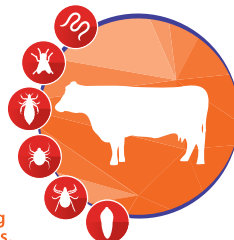
**PASTORAL AG™**

**IVERLAB™**

**PLUS+**

(IVERMECTIN PLUS CLORSULON)

**BROAD-SPECTRUM ANTIPARASITIC  
INJECTION FOR CATTLE**



**ACTIVE CONSTITUENTS:**  
100 mg/mL CLORSULON,  
10 mg/mL IVERMECTIN



**MADE IN  
AUSTRALIA**

**500 ML**

Read the carton for full instructions.

**DIRECTIONS FOR USE****Restraints:**

**Re-treatment interval: DO NOT re-treat animals for 28 days after last treatment.**

**Dosage and Administration:**

To be given by subcutaneous injection only at the recommended dose of 1 mL per 50 kg liveweight (equivalent to 0.2 mg ivermectin per kg and 2 mg clorsulon per kg liveweight). Refer to carton for dosage table.

Inject under loose skin high on the neck, behind the ear in an area away from the more valuable carcass muscle. Loose skin on the neck in front of the shoulder is also a suitable site. This product is not to be used intravenously or intramuscularly.

**WITHHOLDING PERIODS**

**MEAT: DO NOT USE less than 28 days before slaughter for human consumption.**

**MILK: Zero (0) days. There is a NIL milk withholding period for lactating dairy cattle.**

**TRADE ADVICE - EXPORT SLAUGHTER INTERVAL (ESI)**  
**DO NOT USE less than 42 days before slaughter for export.** Before using this product, confirm the current ESI from the distributor on (03) 5820 8444 or the APVMA website ([www.apvma.gov.au/residues](http://www.apvma.gov.au/residues)).

**SAFETY DIRECTIONS**

Poisonous if swallowed.  
May irritate eyes. Avoid contact with eyes. Wash hands after use.

**BATCH:****EXPIRY:**

31953F-1