

# POISON

KEEP OUT OF REACH OF CHILDREN  
READ SAFETY DIRECTIONS BEFORE OPENING OR USING  
FOR ANIMAL TREATMENT ONLY

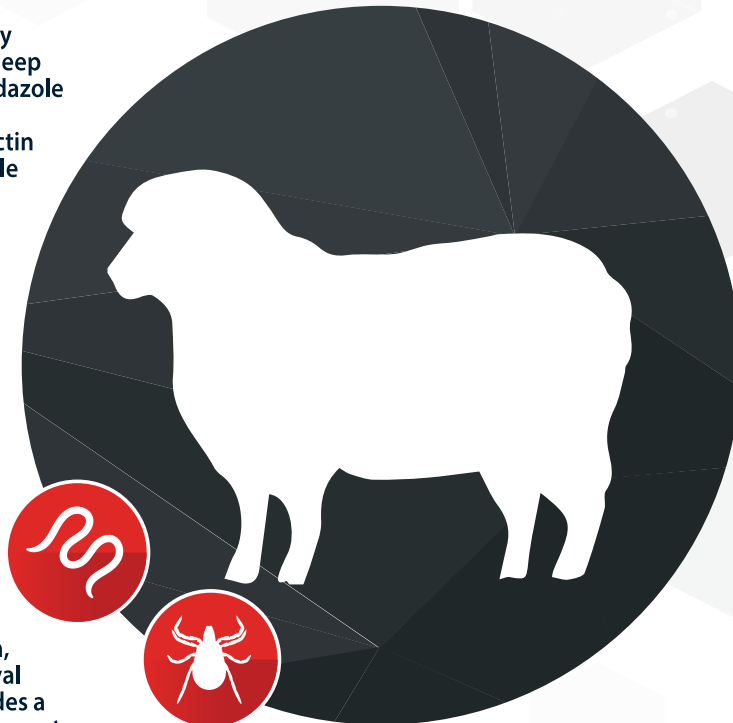
PASTORAL / AG™

# TRIO LAB™

## 3-WAY COMBINATION DRENCH FOR SHEEP

**ACTIVE CONSTITUENTS: 25.5 g/L LEVAMISOLE (as HYDROCHLORIDE), 20 g/L ALBENDAZOLE, 1.76 g/L COBALT (as EDTA), 0.8 g/L ABAMECTIN, 0.4 g/L SELENIUM (as SODIUM SELENATE)**

PASTORAL AG Triolab 3-Way Combination Drench for Sheep contains abamectin, albendazole and levamisole, members respectively of the avermectin / milbemycin, benzimidazole (white drench), and levamisole / morantel (clear drench) families of chemicals. It is effective against gastrointestinal parasites sensitive to one or more of these families, and also those that have single or dual resistance to the avermectin / milbemycin (including moxidectin resistant strains), benzimidazole, or levamisole / morantel anthelmintic families. It is effective against lungworm, itchmite and nasal bot (larval stages) of sheep and provides a selenium and cobalt supplement.



**20 L**

PASTORAL AG Triolab 3-Way Combination Drench for Sheep provides effective control of sensitive, single and dual resistant strains of the following adult and immature parasites of sheep:

**Gastrointestinal roundworms:**

- Barber's pole worm – *Haemonchus contortus*\*
- Small brown stomach worm – *Teladorsagia (Ostertagia) circumcincta*\*
- Stomach hair worm – *Trichostrongylus axei*
- Black scour worm – *Trichostrongylus colubriformis*, *Trichostrongylus vitrinus*
- Thin necked intestinal worm – *Nematodirus spathiger*, *Nematodirus filicollis*
- Small intestinal hair worm – *Cooperia curticei*, *Cooperia oncophora*
- Intestinal threadworm – *Strongyloides papillosum*
- Large mouthed bowel worm – *Chabertia ovina*
- Nodule worm – *Oesophagostomum columbianum*
- Whipworm – *Trichuris ovis*

\*Including inhibited L<sub>3</sub> stage

**Nasal bot:** *Oestrus ovis* (parasitic larval stages only)

**Large lungworm:** *Dictyocaulus filaria*

**Itchmite:** *Psorergates ovis*

Resistance may develop to any chemical. Mathematical models show however that combined use of the anthelmintic families in PASTORAL AG Triolab 3-Way Combination Drench for Sheep can significantly slow the development of resistance. Ask your local veterinarian or animal health adviser for recommended parasite management practices for your area to reduce development of resistance. It is advisable that a resistance test be conducted before any parasite treatment is used.

**DIRECTIONS FOR USE**

**Restraints:**

**DO NOT USE in ewes which are producing or may in the future produce milk that may be used or processed for human consumption.**

**Re-treatment interval: DO NOT RE-TREAT animals for 42 days after last treatment.**

**Contraindications:**

This product is contraindicated for use when selenium intake from pasture is high or selenium is provided by other means (such as top dressing, vaccine, pellets or selenium drenches) or if blood selenium levels at treatment are high. Users can determine selenium status by consulting their veterinarian.

This product is contraindicated for use in animals that are dehydrated or unwell.

This product is contraindicated for use in lambs under 6 weeks of age.

This product should not be used in dogs, horses or any other pets.

**Precautions:**

Exercise care in handling weak, pregnant and young animals to avoid unnecessary stress.

Avoid yarding animals off-feed overnight and ensure animals have access to water when yarded prior to drenching.

Recommended dose should not be exceeded.

**Dosage and Administration:**

**INVERT CONTAINER AND SHAKE WELL BEFORE USE.**

Dose orally without dilution using standard, properly calibrated drenching equipment.

PASTORAL AG Triolab 3-Way Combination Drench for Sheep provides the recommended level of selenium supplementation for sheep (0.1 mg/kg liveweight).

Check the accuracy of drench guns before and during drenching. Ensure each sheep receives and swallows the full dose. Dose according to the following schedule:

Weight Range (kg)	Dose Volume (mL)	Doses per 20 L Pack
9 – 12	3.0	6666
13 – 16	4.0	5000
17 – 20	5.0	4000
21 – 24	6.0	3333
25 – 28	7.0	2857
29 – 32	8.0	2500
33 – 36	9.0	2222
37 – 40	10.0	2000
41 – 50	12.5	1600
51 – 60	15.0	1333
61 – 70	17.5	1142
71 – 80	20.0	1000

Animals heavier than 80 kg to be dosed at 1 mL per 4 kg. A representative sample of animals should be weighed before treatment. Dose the mob to the heaviest animal by live weight in each group (ewes, wethers, rams, lambs). Where there is a large variation in size within the group, dose rate should be based on the label directions for each weight range. Do not underdose. Drafting into 2 or more lines may be appropriate, to avoid excessive overdosing.

**General Directions:**

Benefits and risks of feed withhold:

CSIRO studies show that the efficacy of both abamectin and albendazole (two of the active ingredients of PASTORAL AG Triolab 3-Way Combination Drench for Sheep) are enhanced by withholding feed for up to 24 hours before drenching. However, field experience indicates that withholding water and feed will make sheep more susceptible to levamisole toxicity. Drought conditions may increase this risk. Before use of PASTORAL AG Triolab 3-Way Combination Drench for Sheep, it is recommended that water has been continuously available and feed either not withheld, or withheld for not more than 12 hours.

**WITHHOLDING PERIODS**

**MEAT: DO NOT USE less than 14 days before slaughter for human consumption.**

**TRADE ADVICE**

**EXPORT SLAUGHTER INTERVAL (ESI): DO NOT USE less than 42 days before slaughter for export. Before using this product, confirm the current ESI from the distributor on (03) 5820 8444 or the APVMA website (apvma.gov.au/residues).**

**SAFETY DIRECTIONS**

Harmful if inhaled. Poisonous if swallowed. May irritate the eyes and skin. When opening the container and using the product, wear cotton overalls buttoned to the neck and wrist (or equivalent clothing) and elbow-length chemical resistant gloves and wash hands after use. After each day's use, wash gloves and contaminated clothing.

**FIRST AID**

If poisoning occurs, contact a doctor or Poisons Information Centre. Phone Australia 13 11 26.

**ADDITIONAL USER SAFETY**

Additional information is listed in the safety data sheet (SDS).

**ENVIRONMENTAL PROTECTION**

Abamectin is extremely toxic to aquatic species. Do not contaminate dams, rivers, streams or other waterways with the chemical or used containers.

**DISPOSAL**

Triple-rinse container and dispose of rinsate in compliance with relevant local, state or territory government regulations. Do not dispose of undiluted chemicals on-site. If the container has the drumMUSTER logo visible, and has been thoroughly cleaned and dried, and is free of any visible residues, it can be recycled at any drumMUSTER collection or similar container management program site. The cap should not be replaced, but may be recycled separately at the drumMUSTER collection site. If not recycling, break, crush, or puncture container and deliver to an approved waste management facility. If an approved waste management facility is not available, bury the broken, crushed or punctured containers 500 mm below the surface in a disposal pit specifically marked and set up for this purpose clear of waterways, vegetation and tree roots, in compliance with relevant local, state or territory government regulations. Do not burn empty containers or product. In the event of significant product spillage, use absorbent materials such as soil, sawdust or sand then bury material as above.

**STORAGE**

Store below 30 °C (room temperature). Store out of direct sunlight, in the original container with the lid tightly closed.

**May damage fertility or the unborn child.**  
 Do not get in eyes, on skin, or on clothing.  
 Wash contacted areas thoroughly after handling.  
 Do not eat, drink or smoke when using this product.  
**IF SWALLOWED:** Rinse mouth. Do NOT induce vomiting.  
 Store locked up in a dry, well-ventilated place. Keep cool.

B:

EXP:



661508-1

